



B.T.I. Inc Customer Roster.

Solar Turbines Small Business
Subcontractor of the Year '2000.

- Allied Signal
- Alumi-Craft
- American Fence
- Barbee Valve
- Bodycote
- Coast Heating and Air Conditioning
- Cubic Corp.
- Disctlo Corporation
- Easton Composites
- General Atomics
- HiTech Irrigation
- Icon Enclosures
- Infinity Aerospace & Components
- Jacobs Woodworks
- Jiffy Machine
- Jimco Racing
- KUSI Channel 51
- Lambda Square Inc
- Landfill Gas and Environmental
- Northrop Grumman
- RTB
- San Diego State University
- Sierra
- Solar Turbines Incorporated (certified)
- Sony
- Sundstrand Power Systems, 1992 & Previous
- Teledyne Ryan Aeronautical
- Thyssen-Krupp
- Weekend Concepts

**WE WELCOME YOUR VISIT
TO OUR FACILITIES.**

Quality Machined Parts to Your Specs.



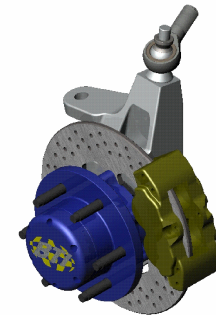
CNC Turning Services

SHOP CAPABILITIES



Specializing in: Contract Machining Services

- CNC Milling & Turning
- Job Shop Services
- Metalworking Design
- Prototyping
- Welding



Contract Sales -Please Contact:

- Todd Barnhill
Email: jtb@bti-tool.com

BTI Inc – Better Tools For Industry
9525 Pathway St. – Santee Ca 92071

B.T.I. Inc – Better Tools For Industry
9525 Pathway Street
Santee CA 92071
(619)562-3071 FAX(619)562-0592
url: www.bti-tool.com

SECOND TO NONE

B.T.I. is a growing business with extensive experience in its field. We respectfully request placement on your bid list for any close tolerance operations listed below:

COMPETENT DESIGNING AND BUILDING

- Contracts for the aerospace and commercial industries, ranging from prototypes to sophisticated tooling.
- Weld fixtures, lifting devices and machine tools of all types.
- Short and long run production of machined parts.
- Full 3 Axis machining
- Structural assemblies
- Machine shop activities including MIG, TIG and aluminum welding.
- CNC Vertical Machining Centers:
 - (2) **1998 Haas VF-2 Vertical Machining Center**
X=30", Y=16", Z=20", with fully automatic table size 36"X14". Accuracy: 0.0001 " (.003mm)
 - (1) **1995 Haas VF-3 Vertical Machining Center**
X=40", Y=20", Z=25", with fully automatic table size 18" x 48" Accuracy: 0.0001 " (.003mm)
 - (2) **1998 Haas VF-4 Vertical Machining Center**
X=50", Y=20", Z=25", with fully automatic table size 52"X18" Accuracy: 0.0001 " (.003mm)
 - (1) **'2004 NV5000 (1A/40) Vertical Machining Center**
X=31.5"(800mm), Y=20.1"(510mm), Z=20.1"(510mm), with fully automatic table size 43.3"(1100mm)X23.6"(600mm)" Accuracy: .0001
 - (1) **VF-9/40 Vertical Machining Center**
Milling Machine
X=80", Y=40", Z=30",
with fully automatic table size 84" x 36" overall
Accuracy: 0.0001 " (.003mm)
- CNC Turning Centers w/ bar loaders
 - (1) **'2001 Mori Seiki ZL200SMC w/5th axis w/ Twin Spindles/ Twin Turrets**
Max. turning dia: Chuck No.1: 390 mm (15.3 in.)
No.2: 294 mm (11.5 in.)
 - (1) **'2000 HAAS SL-30 Turning Center**
14.5" x 34" x 10" Chuck
Turning Dia.:14.50" 368 mm
Radius: 7.64" (194mm)
 - (1) **'2004 NL2500MC/700 Turning Center**
14.5" x 34" x 10" Chuck
Turning Dia.:14.50" 368 mm
Radius: 7.64" (194mm)

CONVENTIONAL MACHINE SHOP EQUIPMENT

- Lathes With digital readouts are excellent for high tolerance, low cost operations. (1) **Cadillac 21"** w/digital
(1) **Ocurna 21"** w/digital
dia x 60" length capacity
- Mills
Power feed with Mitutoyo or Anilam digital displays.
(2) 1988 Webb heavy duty with 10" x 50 table, X=34", Y=16"
(1) 1989 Bridgeport type, with 9" x 42" table, X=12", Y=30"
- Metal Cutting
Production sawing with close tolerances.
 - (1) **'2000 HYD-MECH V-18APC Heavy-Duty Band Saw**
Cap. 18" x 20" Digital Tilt Frame
Square: 18" x 20", Round: 18", Round 45°: 13"
6°cant 90° 18", 6°cant 45°: 12"
 - (1) **#8 Mark 1 Marvel -Tilt Frame**
Saw with 18"X22" for all materials
 - (1) **Esab - 875 230V Plasma Cutter**

Welders:

- (1) Lincoln V-300 PRO, Flux core Welder
for aluminum and steel
 - (1) Miller Millermatic 250, Wire, Mig Welder
 - (1) Linde 225, Wire, Mig Welder
 - (1) Lincoln Square Wave 350, TIG
& Stick Welder
- General Use Arbors and Presses

SHEET METAL SHOP EQUIPMENT

- (1) **Omada Turret Punch –**
Model VIPROS 255
- (1) **Press Brake – Bending Machines**
Model RG-80

INSPECTION Measuring Equipment:

CMM

'2006 Mitutoyo - Model No. CRT-A C9106
Range: 34"x38"x22"

Surface Tables:

- (1) 4ft x 5ft, Grade "A" pink granite
- (1) **3ft x 4ft "tool room grade"**
Micrometers, gages, test indicators,
dynamometer and other instruments
required for accuracy in tolerances.

CAD/CAM Systems. Including:

Surfcam 4th Axis Plus" w/NC verify, multi- surface
machining, lathe package (2) Seats;
SolidWorks 2008 Plus design software

We are experienced working with the following:

Mild Steel: A-36, 1018, 1020, 1022, 1045;
Stress Proof: 1144; **Chromoly:** 4130,4140,
4142, 4340; **Stainless Steel:** 303, 304, 316,
321, 416, 17-4, 15-5; **Inconel:** 625, 718;
Hastaloy, Titanium: 6242, 6AL4V;
Aluminum: 2024, 5052, 6061-T6, 7075-T6;
Tool Steel: A2, D2, W1, 01 and the following:
Copper, Cast Iron, 360 Brass, Teflon, Nylon,
Delrin PVC, Neoprene, Acrylic & Lexan.

B.T.I. Inc
Better Tools For Industry
9525 Pathway Street
Santee CA 92071
(619)562-3071 FAX(619)562-0592

url: www.bti-tool.com
Internet: <http://www.bti-tool.com>